

ARCHITECTURE PORTFOLIO

CAMILA CHAVERRA



ABOUT ME

Architectural designer with over 14 years of experience in architectural drafting, BIM Modeling, and multidisciplinary coordination for diverse project types such as **healthcare, educational, residential and urban projects.**

Highly skilled in **Revit, AutoCAD, Navisworks, BIM 360, and Bluebeam**, with strong focus on developing detail architectural documentation, maintaining model accuracy, and ensuring seamless collaboration between design and engineering teams.

EXPERIENCE

Architectural Drafter - Freelance
January 2025 - Present

Architectural Designer
May 2014 - December 2024

Architectural Drafter
June 2013 - May 2014

Architectural Drafter
October 2012 - May 2013

SOFTWARE

2D	Rendering	Post-production
AutoCAD	Twinmotion	Photoshop
	V-ray	Illustrator
3D	Lumion	Indesing
Revit	Document management	
Sketchup	BIM 360	
Coordination	Trimble	
Navisworks	Bluebeam	

EDUCATION

Bachelor in Architecture,
January 2006 - December 2011

CERTIFICATIONS

BIM Engineering (MEP)
Naska Digital / Autodesk
September 2025 - currently

BIM Architectural Design,
Naska Digital / Autodesk
October 2024 - February 2025

Artificial Intelligence
Naska Digital
October 2024 - Currently

LANGUAGES

Spanish - Native
English - B2
French - A1

CONTENT

01 Education (k12)
Educational Institution San Antonio, Rionegro, Ant, Col.



02 Education (k12)
Educational Institution Agricola, San Jeronimo, Ant, Col.



03 Education
Child Development Center, Itagui, Ant, Col.



04 Helthcare
Hospital Guadalupe Guadalupe, Ant, Col.



01 SAN ANTONIO

EDUCATIONAL (K12)

Rionegro, Ant, Colombia.
110.800 SQFT

A line interrupts the landscape.

Due to the topography of the site, a staggered layout was developed to separate the preschool, elementary, and secondary areas in their outdoor spaces.

The interior of the building, which is designed for 1,500 students, has 36 classrooms each of them for 40 students and three preschool classrooms for 20 students; four laboratories, one multipurpose room/dining room, one library, and six spaces for multipurpose student use.

Participation :

SD-DD-CD

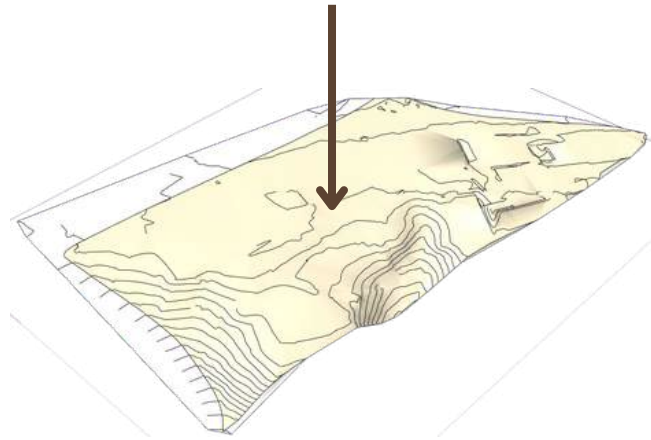
3D visualization

Coordination with multi-disciplinary team

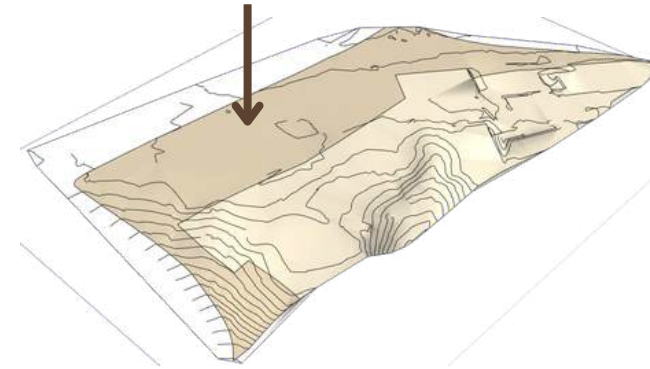
Coordination with the "Education ministry" (government approval)



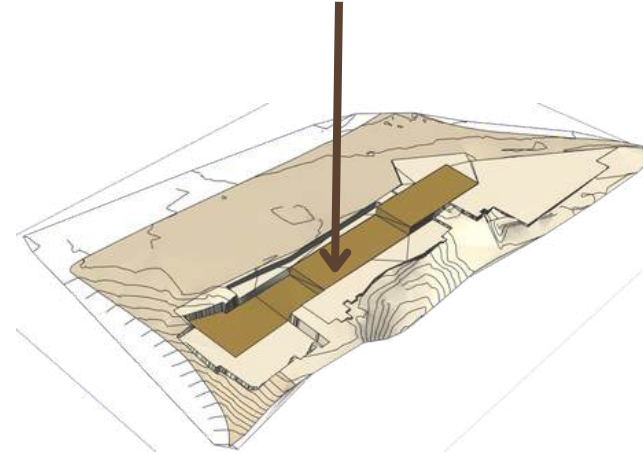
SITE



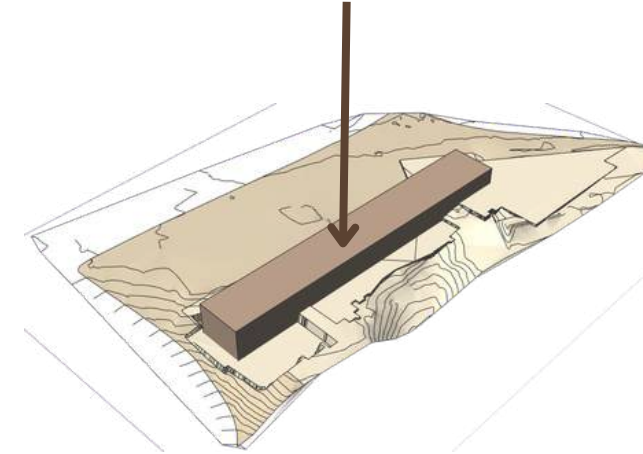
50% OF SUCCESSION
FOR THE CITY



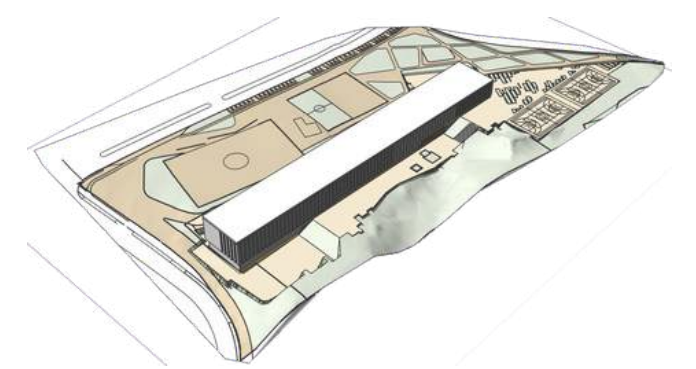
LAND GRADING



VOLUMETRY



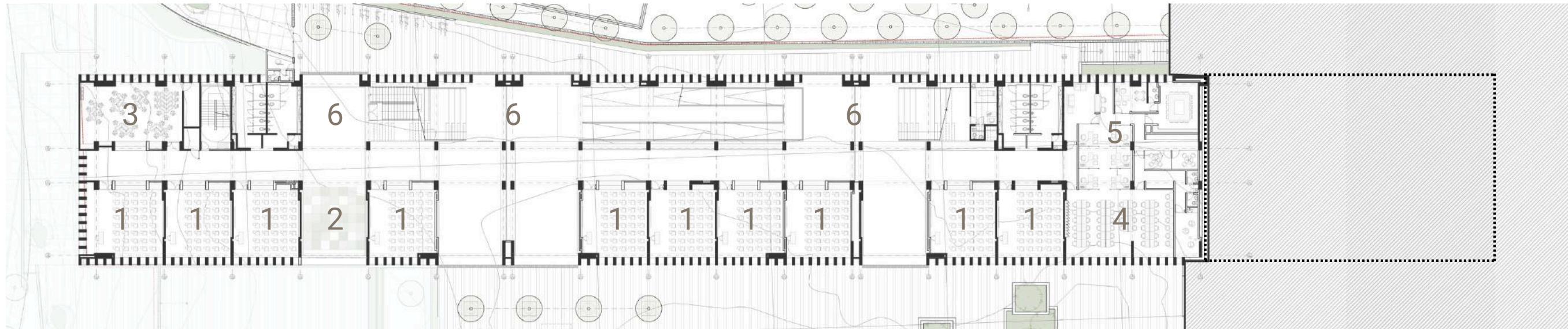
URBAN PLANING



- **50% of succession of the lot** for the city,
- **its steepness**
- The **cold climate** give us a result in the use of lines in every direction.
- A **line that breaks up the landscape.**
- **Vertical lines (the façade)** to visually adjust the size of the building.
- And **horizontal lines** (the grading) on the most exposed part to separate the small ones from the big ones (preschool, elementary, and middle school).

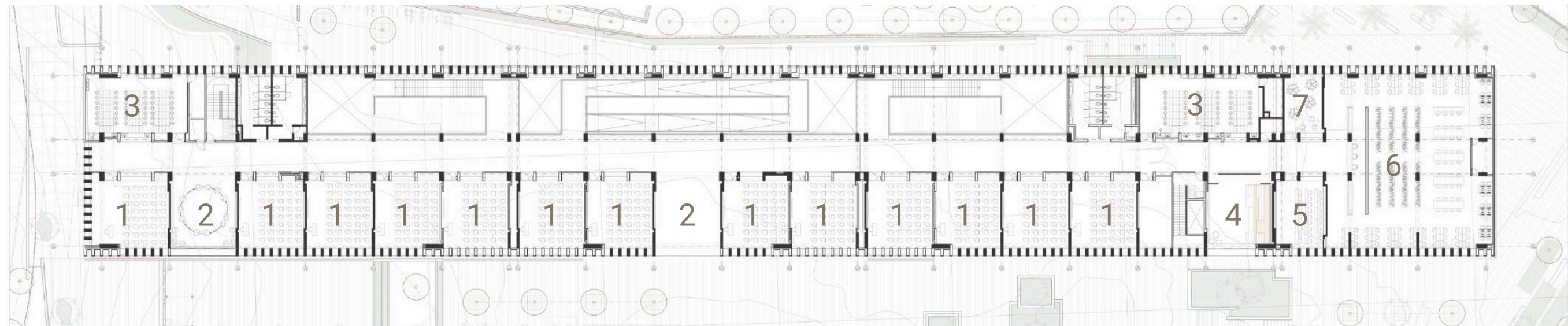
INSERTION IN URBAN
CONTEXT





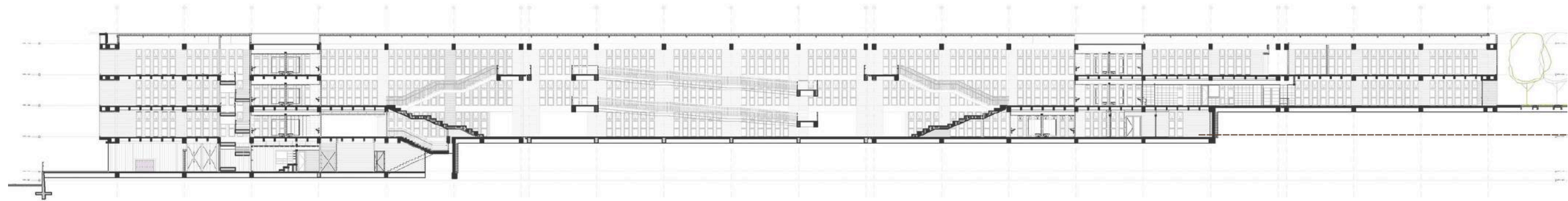
LEVEL + 0.00

- 1. Classrooms
- 2. Study Halls
- 3. Tecnology laboratory
- 4. Teachers Room
- 5. Administration
- 6. Access Hall

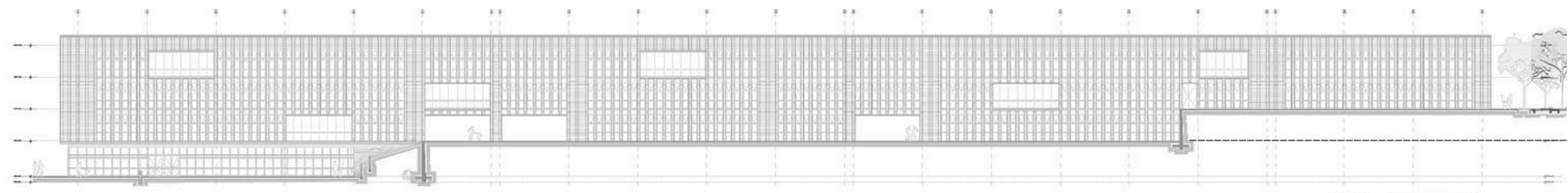


LEVEL + 7.20

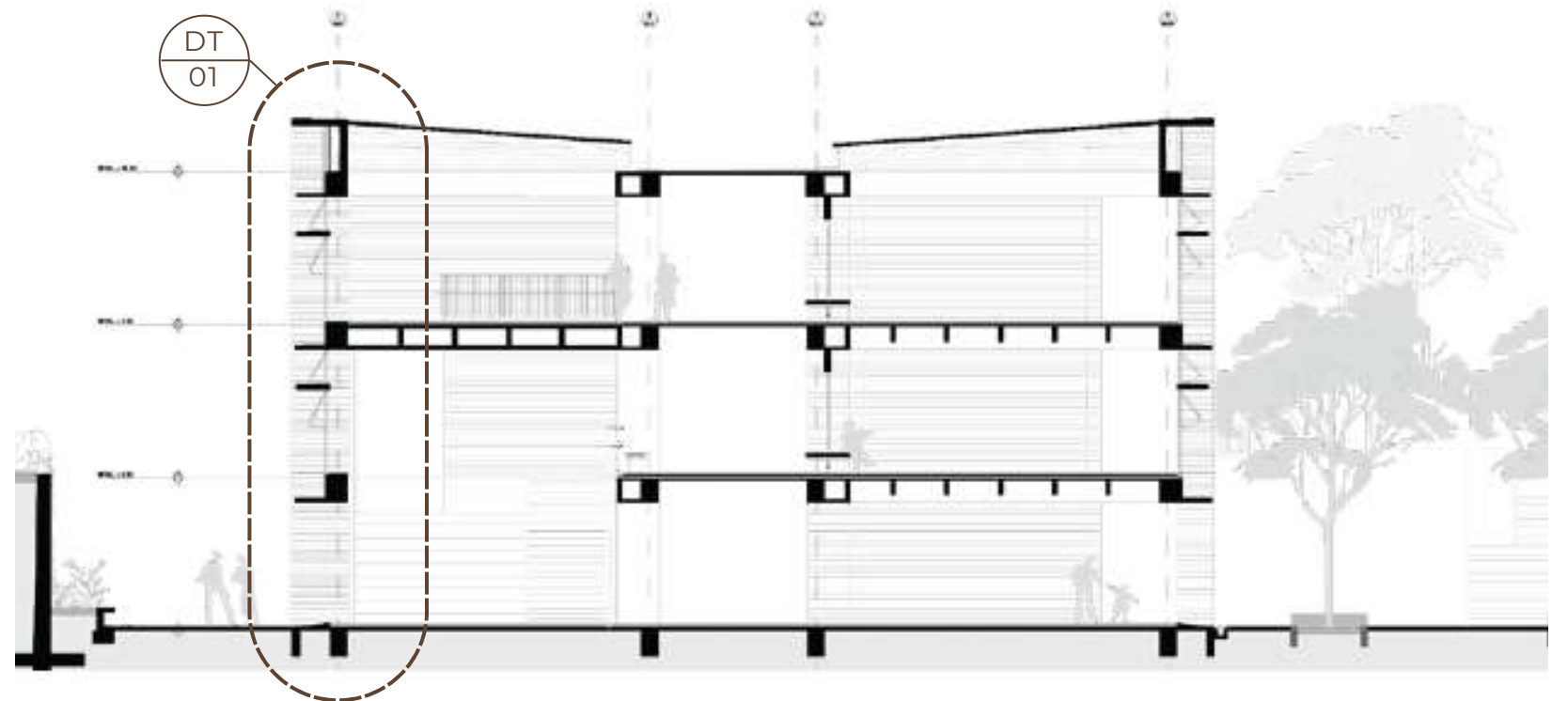
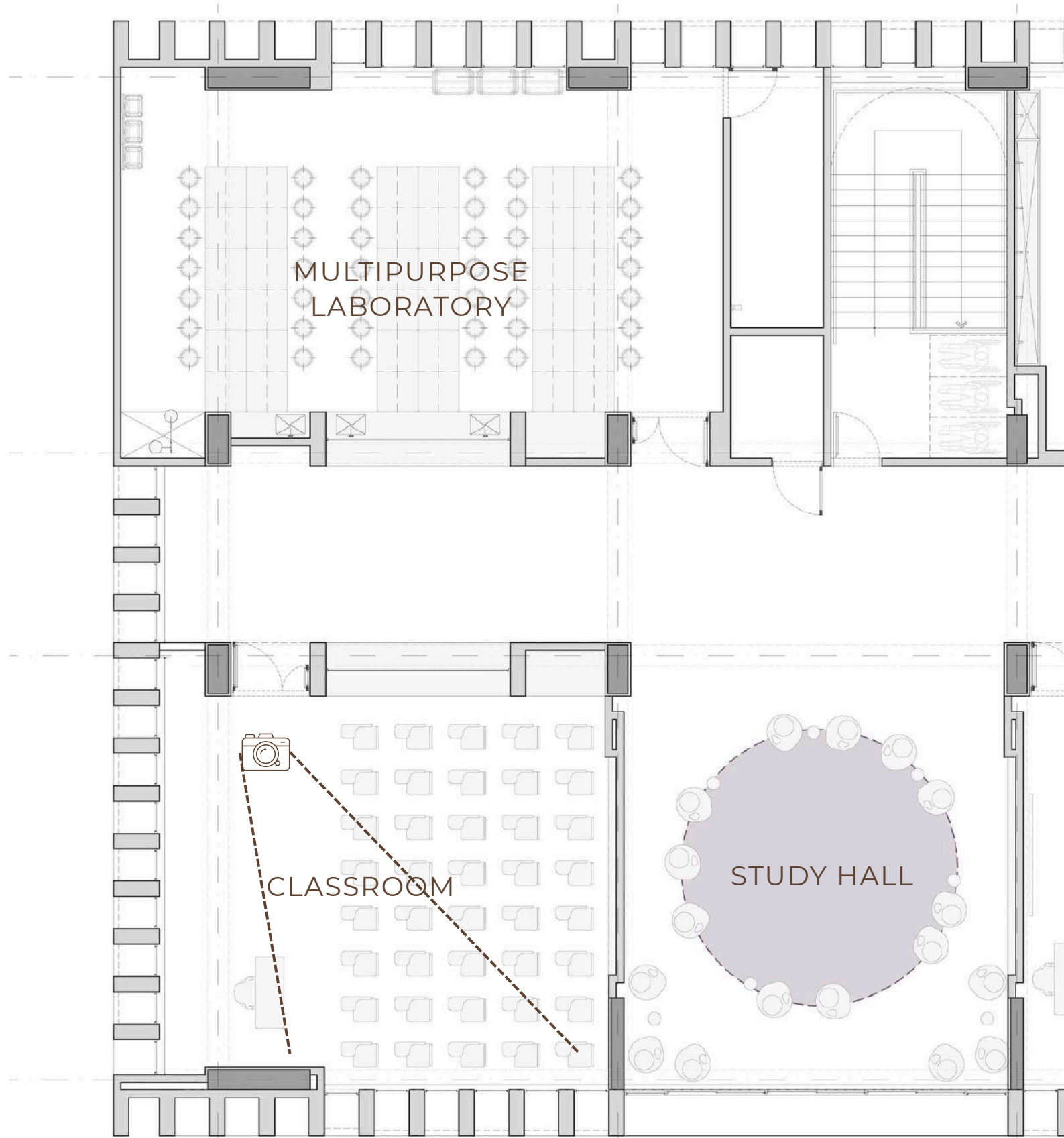
- 1. Classrooms
- 2. Study Halls
- 3. Multipurpose laboratory
- 4. Oratory
- 5. Bilingual classroom
- 6. Library
- 7. Playroom

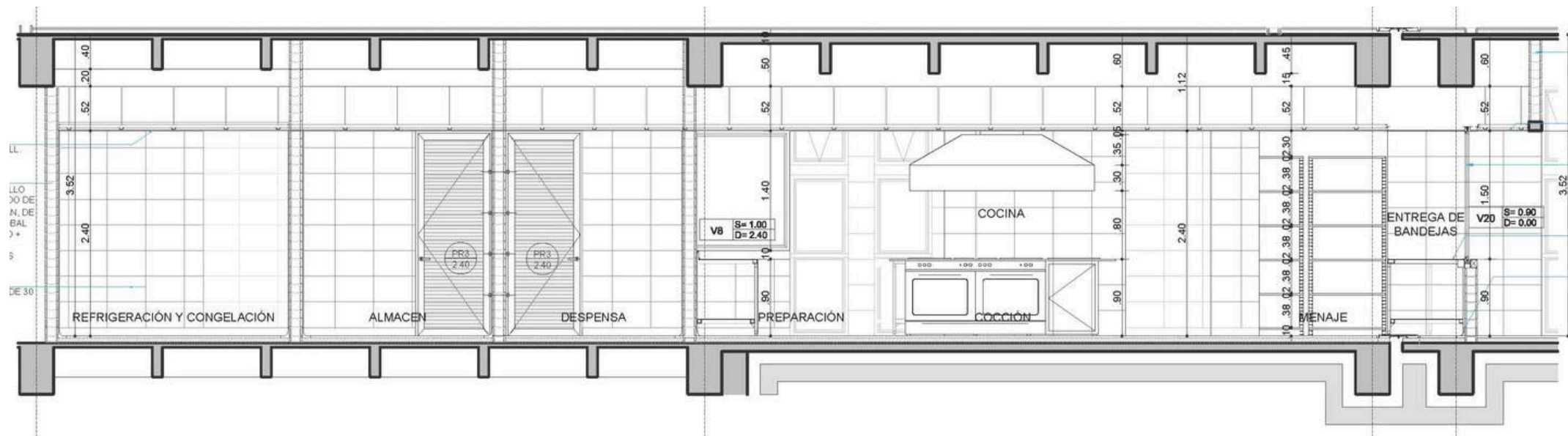
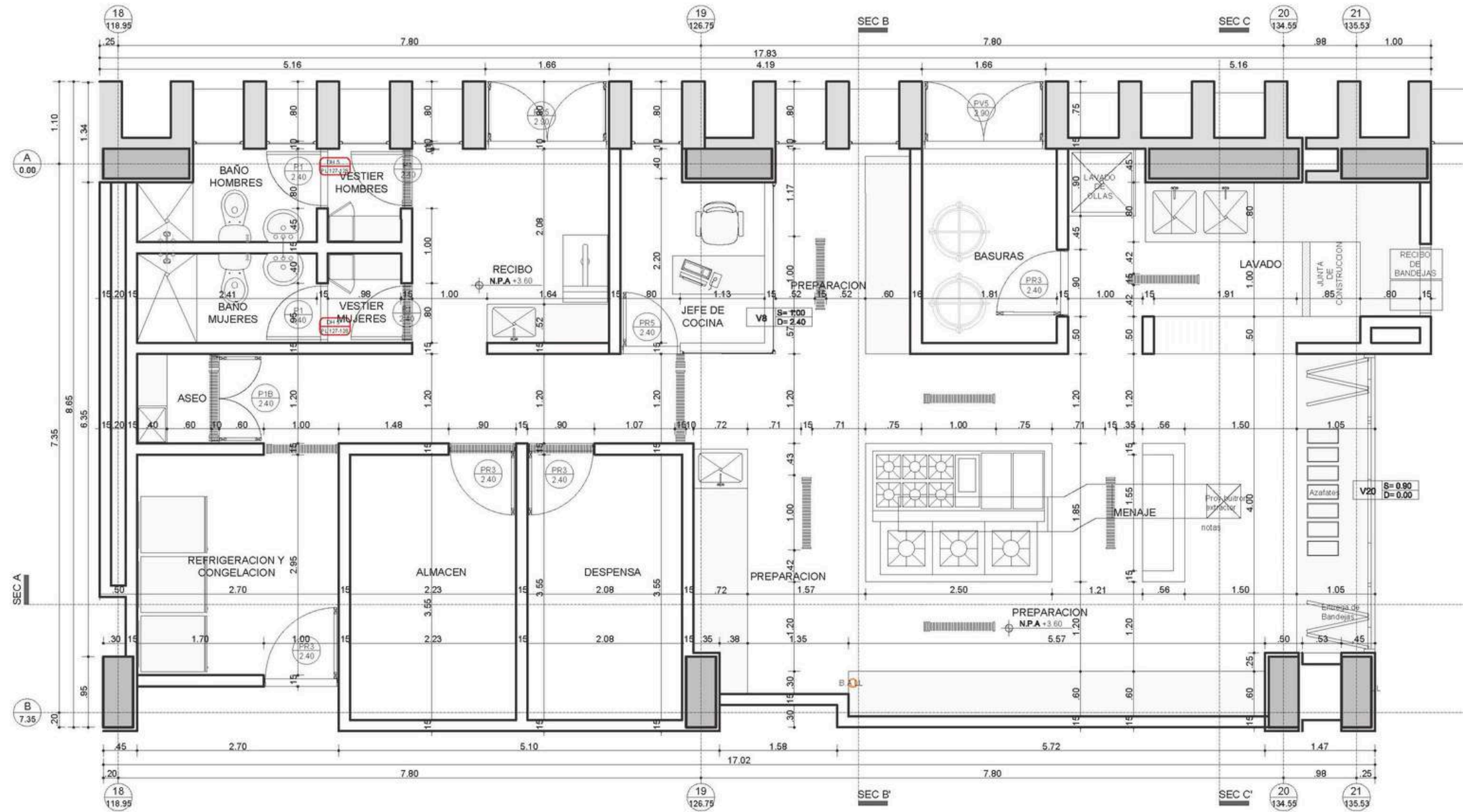


LEVEL + 0.00

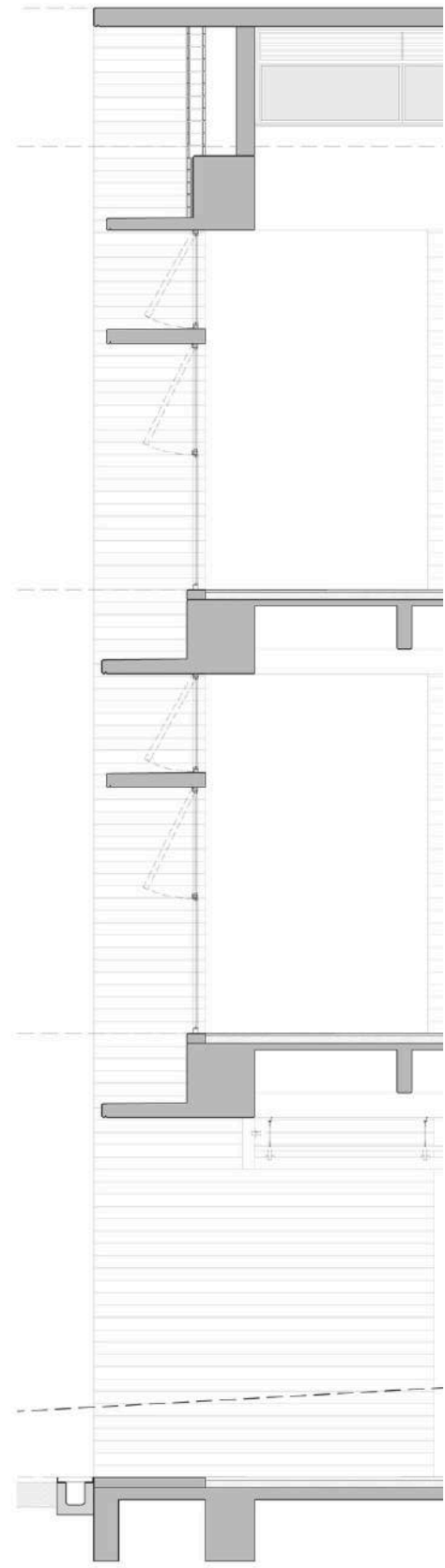


LEVEL + 0.00

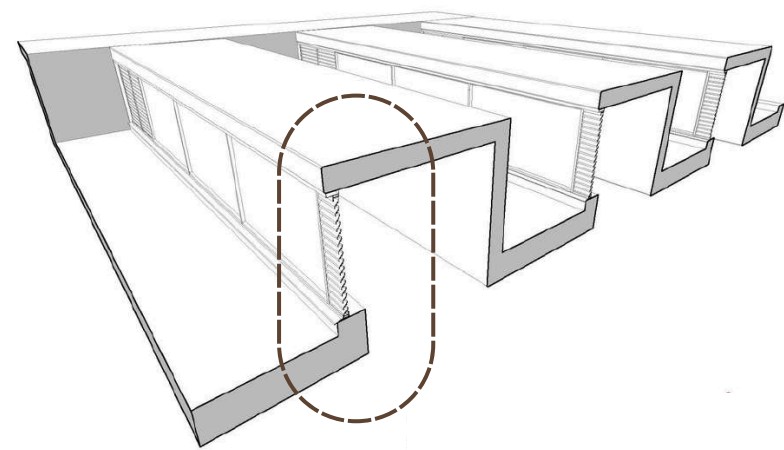
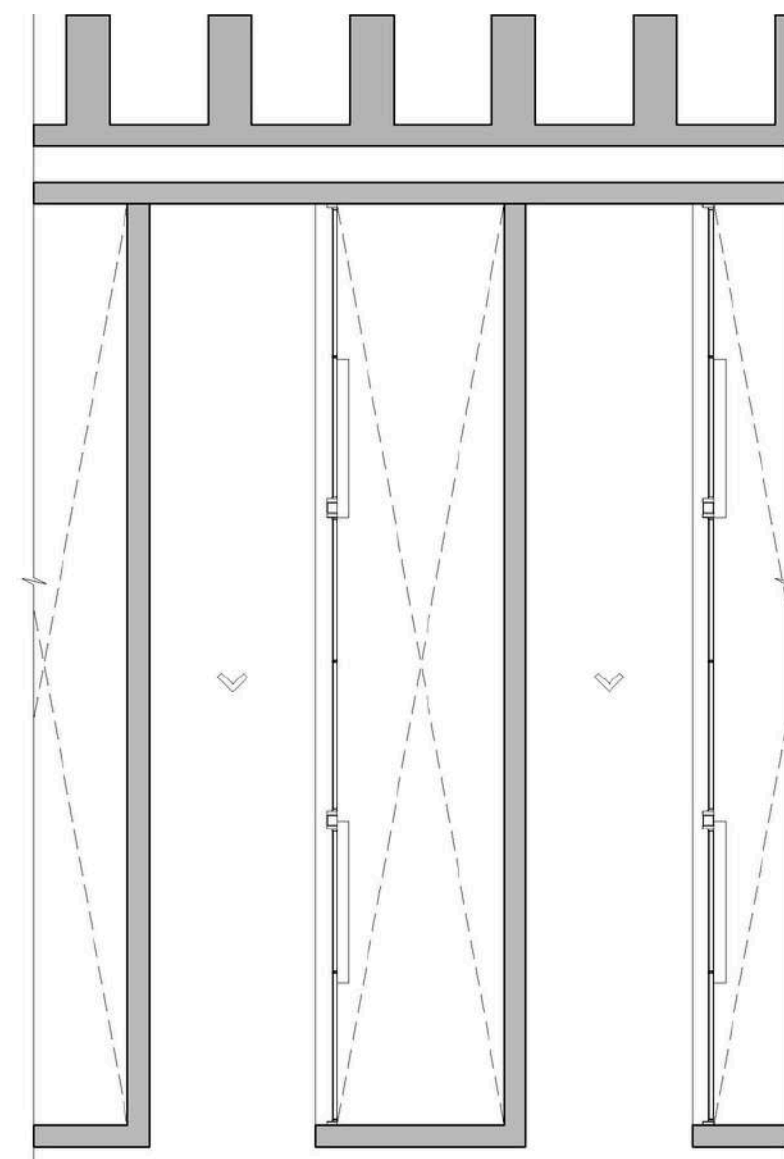




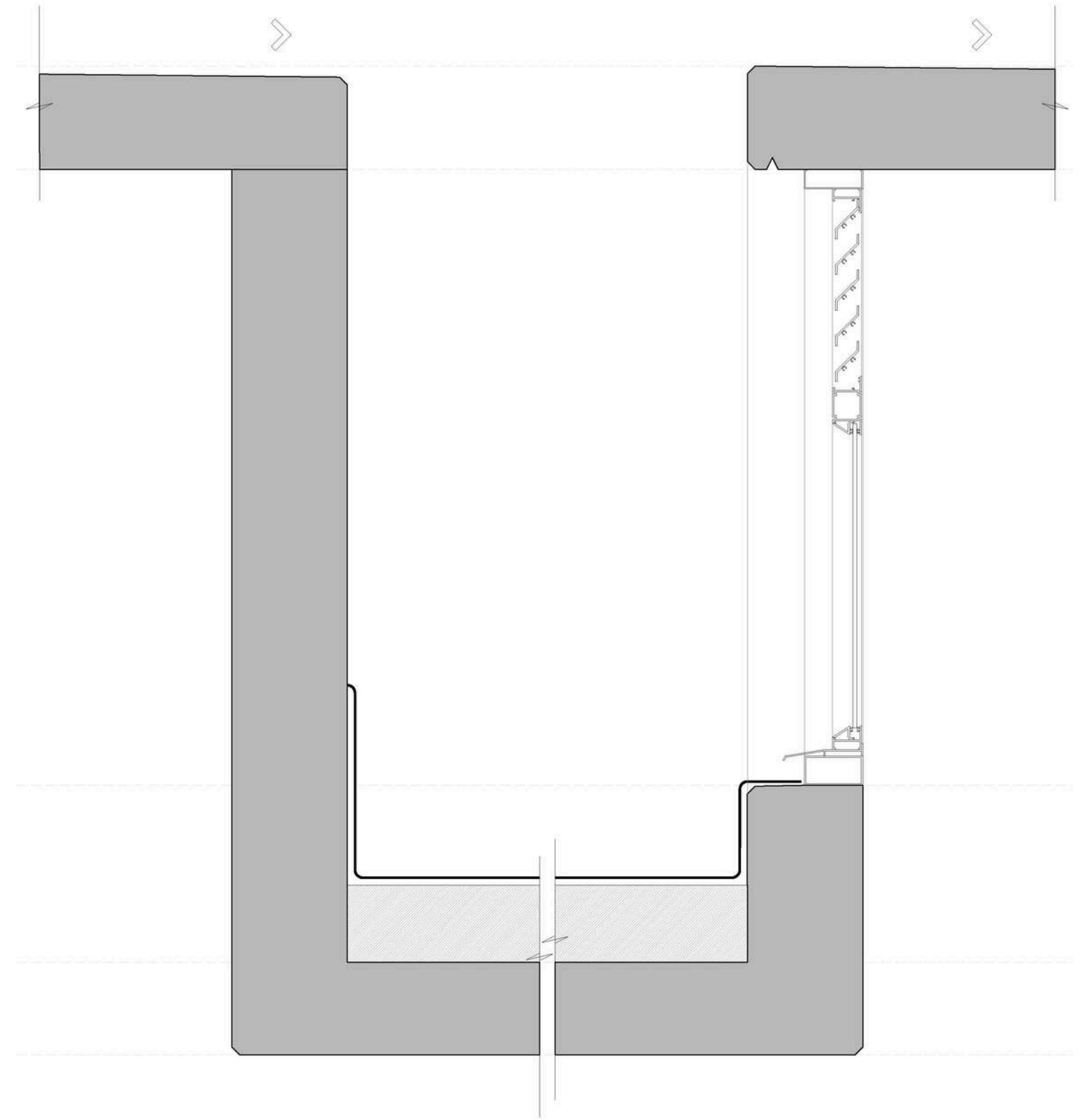
CONSTRUCTION DETAIL OF THE KITCHEN, FOLLOWING THE EDUCATIONAL CODE.



DT 01 - DETAIL FACADE



DETAIL CONSTRUCTION OF THE ROOF



02 AGRÍCOLA

EDUCATIONAL (K12)

San Jeronimo, Ant, Colombia.
41.979 SQFT

Vertical Garden

Nestled among the mountainous landscape of San Jeronimo is this small school dedicated to agriculture and livestock farming, which no longer has enough space for the number of students in the area. As a result, the municipality decided to use the lot, preserving its green areas and fish pond, but expanding its facilities with a new building.

The idea is to bring the greenery from outside into the building, allowing students to never lose touch with what they are learning. Thus, the vertical garden was born, a double skin filled with gardens, and inside, courtyards that will bloom in season.

My participation in this project was from the SD to the DD, since the Ministry of Education has not yet approved the project for construction. I was also in charge of the technical review of the other contractors' plans, as well as producing the first sketch in accordance with educational regulations and the first 3D model to be presented to the government agency in charge..

Participation :

SD-DD

3D visualization

Coordination with multi-disciplinary team

Coordination with the "Education ministry"

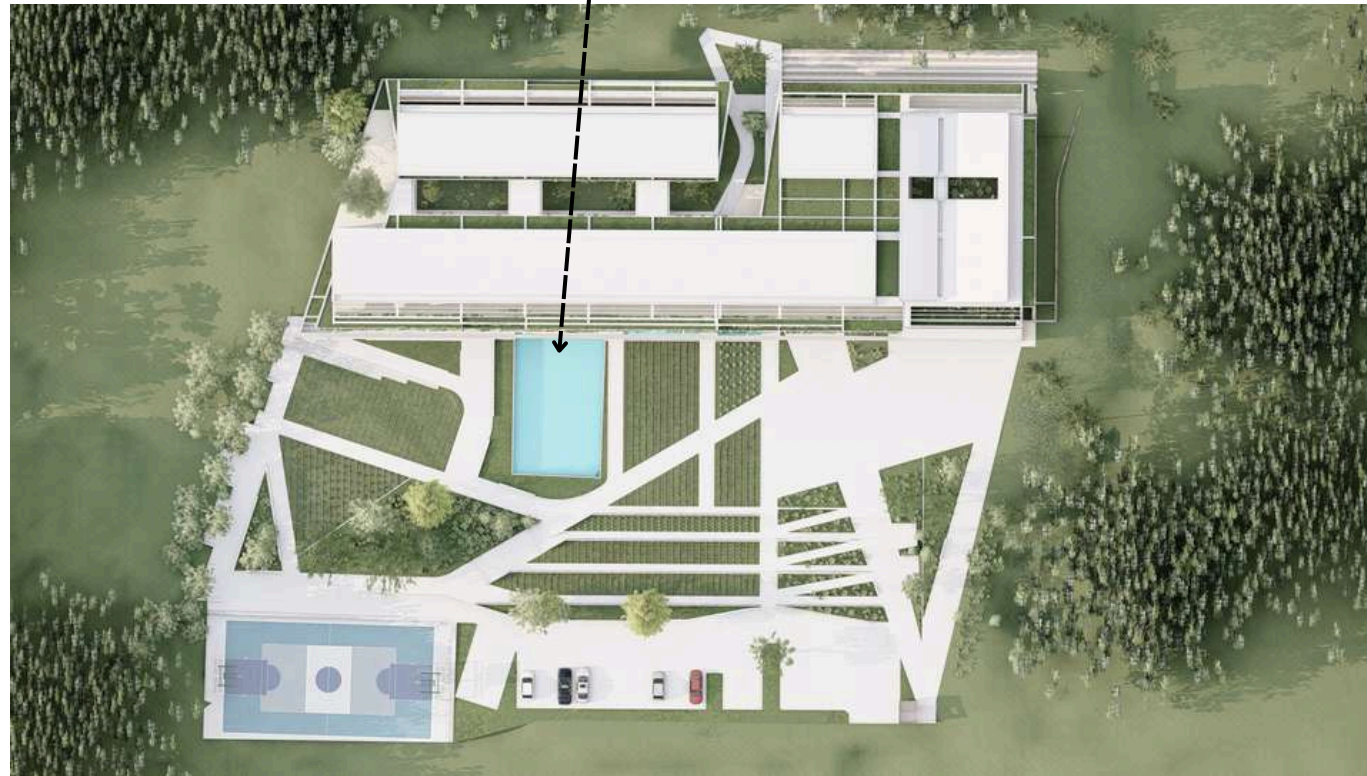
(government approval)





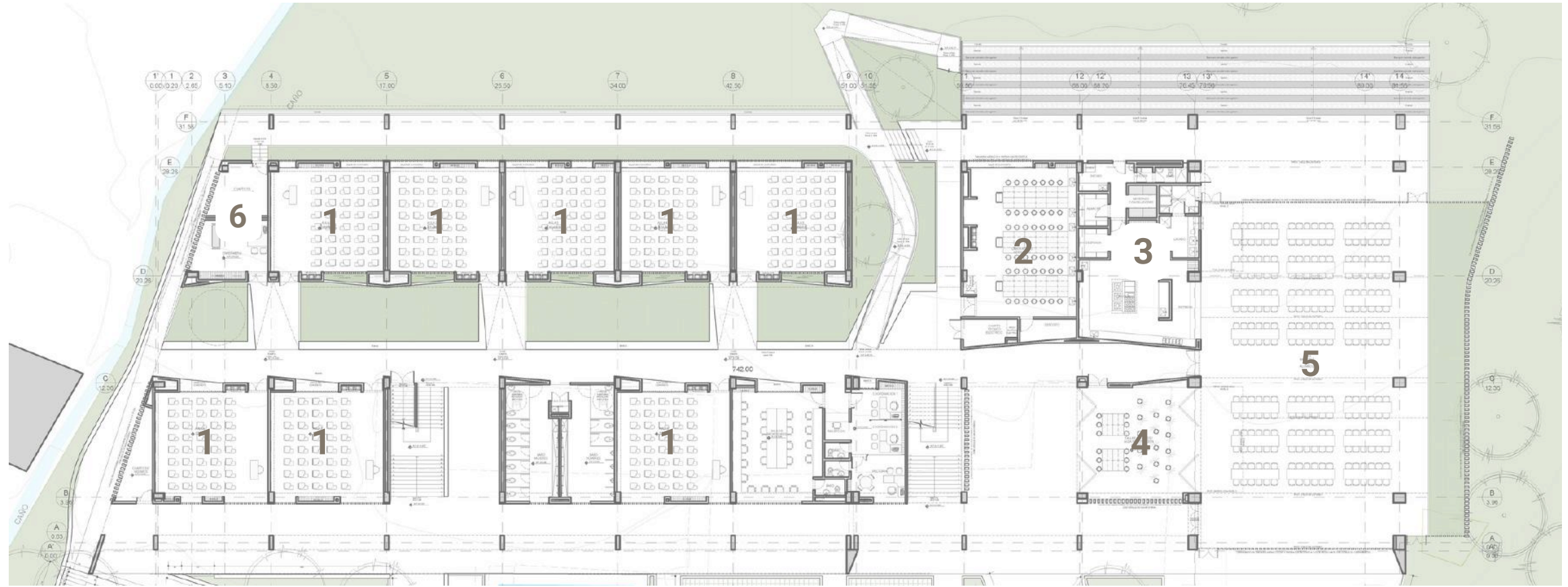
660 students

- 15 classrooms for primary and middle school
- 3 classrooms for preschool
- 1 dining room (multipurpose room)
- 1 library
- 3 laboratories.



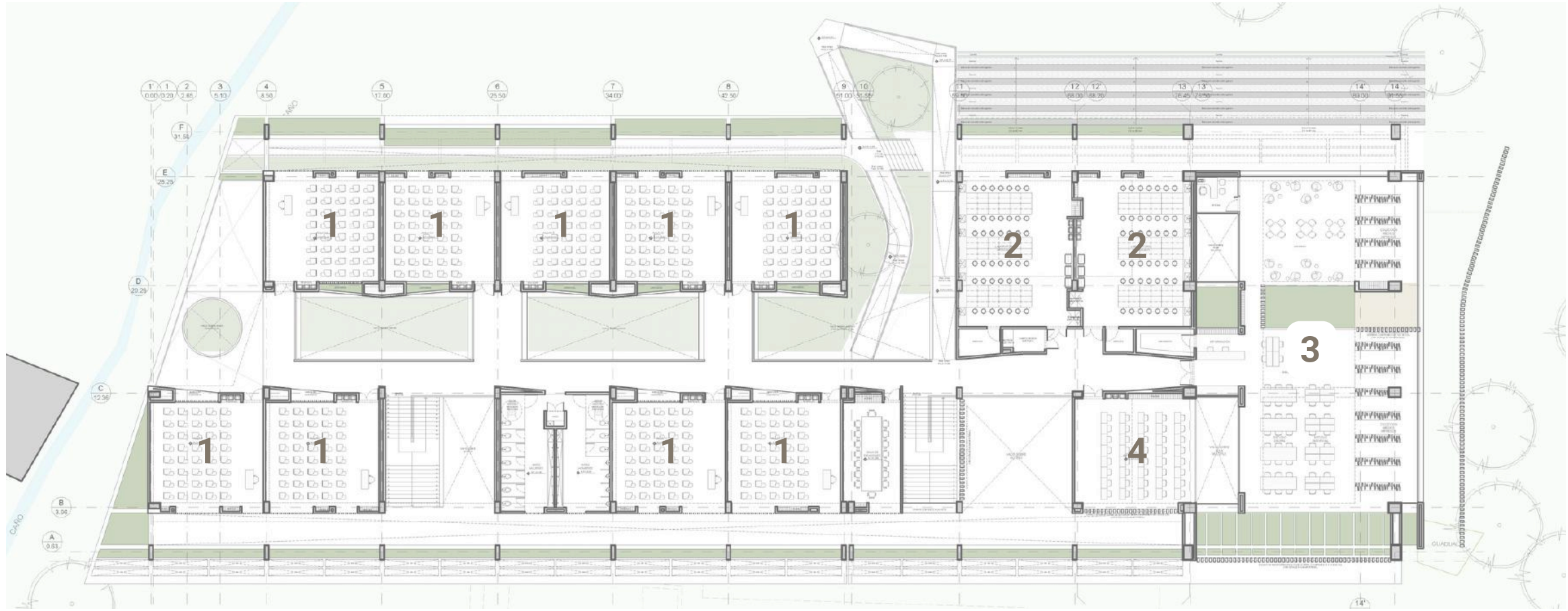
LEVEL 1

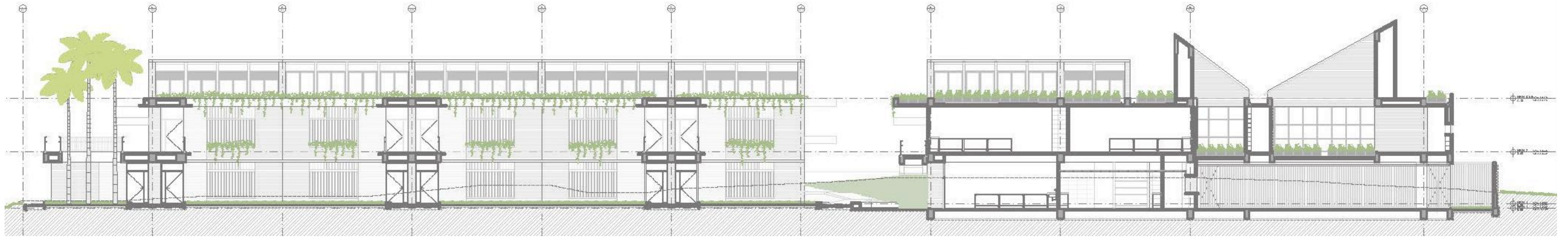
- 1. Classrooms
- 2. Cience Laboratory
- 3. Kitchen
- 4. Artistic Room
- 5. Multiple Room
- 6. Enfermery



LEVEL 2

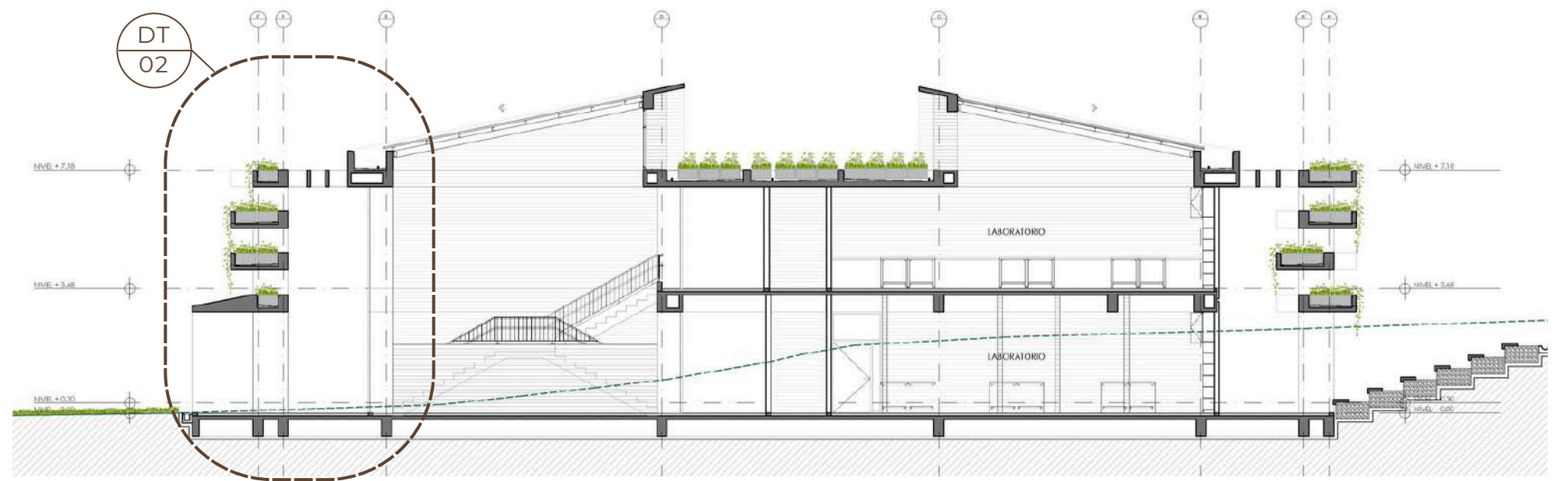
- 1. Classrooms
- 2. Cience Laboratory
- 3. Library
- 4. Tecnology Room







DT 02-FACADE DETAIL - SECTION A
VERTICAL GARDEN



SECTION A



03 CHILD DEVELOPMENT CENTER

EDUCATIONAL

Itagui, Ant, Colombia.
41.979 SQFT

Color Box.

A spacious facility designed to enhance the quality of life for local families, providing care for children aged 0 to 3 years old.

The concept: A box of colors. Each classroom represents a pencil, a space where creativity and imagination come to life.

Due to the site's characteristics, this colorful box was divided into two mirrored volumes containing the classrooms, and a central volume housing the administrative offices. The project features a double facade that ensures privacy for the children while allowing natural light and pleasant views for the staff. A central ramp in each block ensures accessibility and fluid circulation for all users.

As the design architect, I was responsible for the accurate planimetric development of the building, coordinating technical teams, and ensuring compliance with all relevant regulations.

Participation :

SD-DD-CD

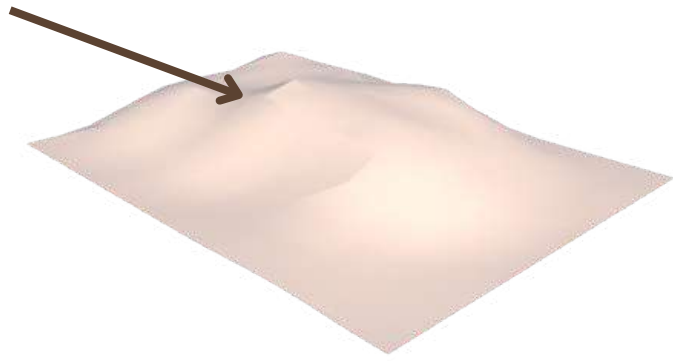
3D visualization

Coordination with multi-disciplinary team

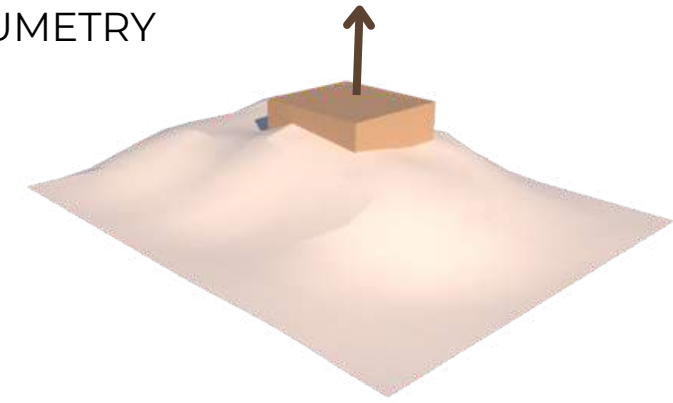
Coordination with the "Education ministry" (government approval)



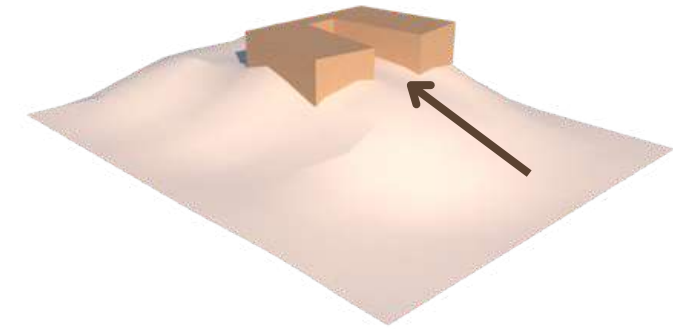
SITE



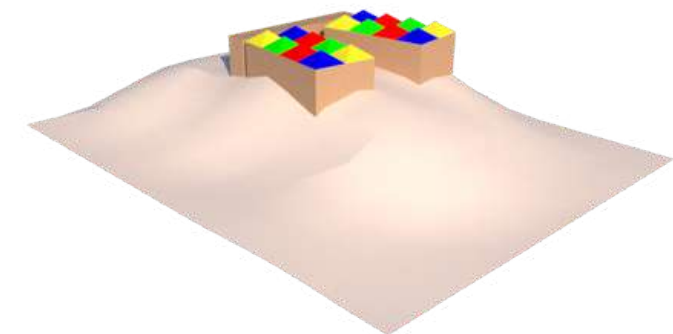
VOLUMETRY



SEPARATION



IDEA



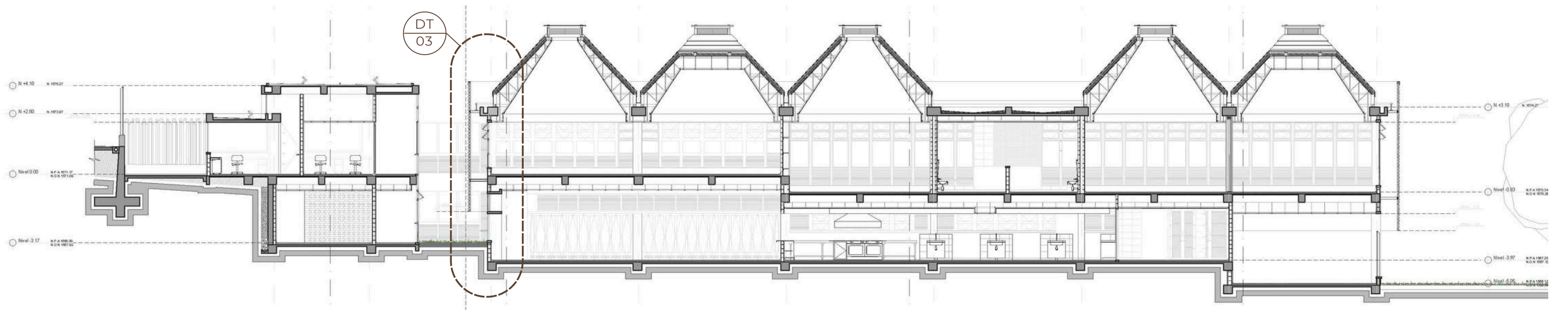


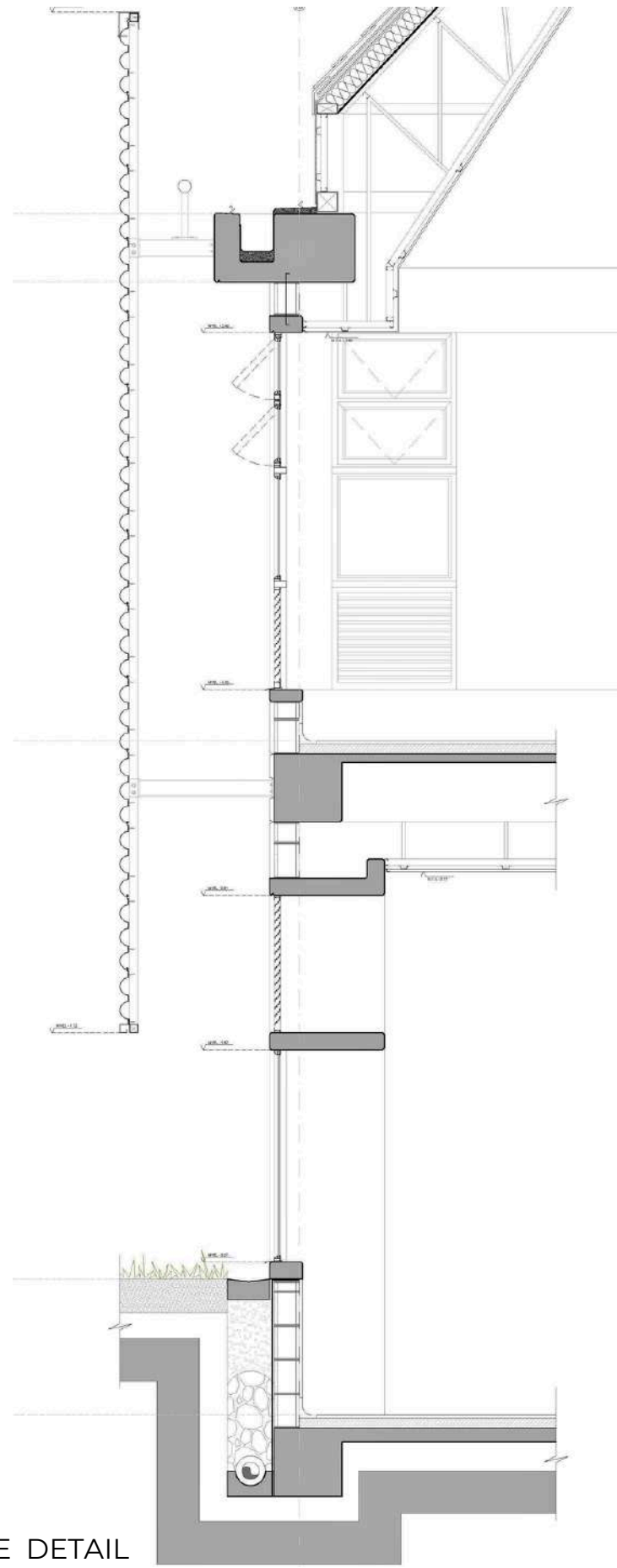
LEVEL 1
1. Classrooms
2. Administration
3. Enfermary



LEVEL -1

- 1. Classrooms
- 2. Nursery
- 3. Kitchen
- 4. Multiple room
- 5. Administration





DT -03 -
FACADE DETAIL



04 HOSPITAL GUADALUPE

HEALTHCARE

Guadalupe, Ant, Colombia.
26.909 SQFT

Mixed Boxes

A hospital for a small town in rural Antioquia, created to meet the high demand for hospital services in the area.

The site, was a gift from the regional government to the mayor's office.

It did not present any major difficulties as it was fairly flat, so a single-level space was designed with several divided boxes, but with obvious connections between them at varying heights to give the building a little movement.

There are two separate entrances, one for emergencies and one for outpatients, both connected by a service road.

In this project, I was in charge of the complete planimetric development, multidisciplinary coordination, and coordination with the Ministry of Health.

Participation :

SD-DD - DC

3D visualization

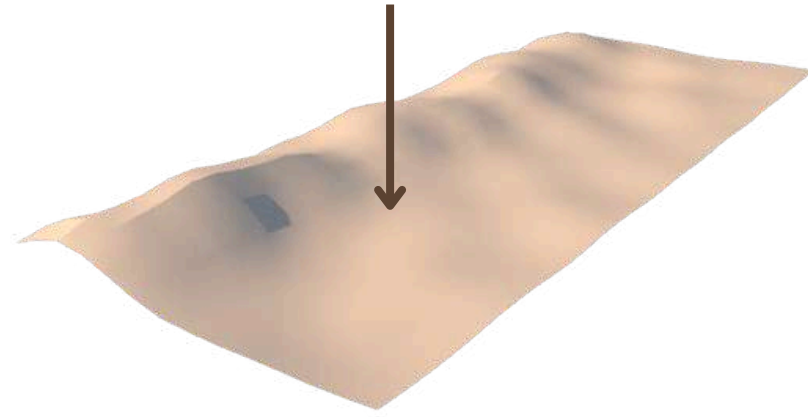
Coordination with multi-disciplinary team

Coordination with the "Education ministry"

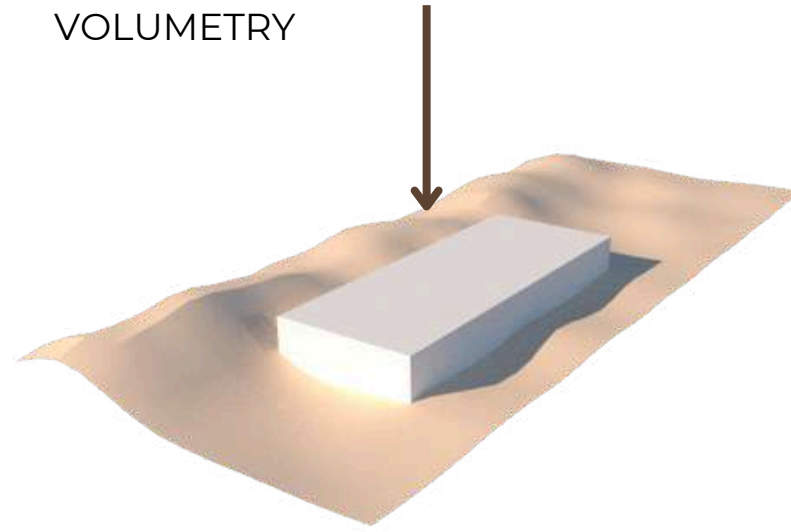
(government approval)



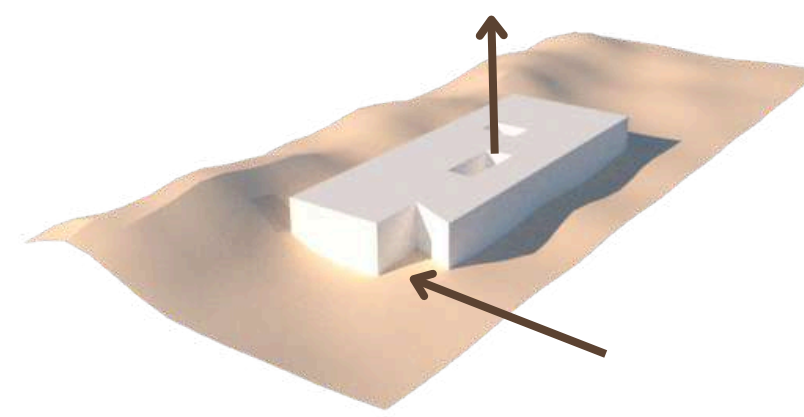
SITE



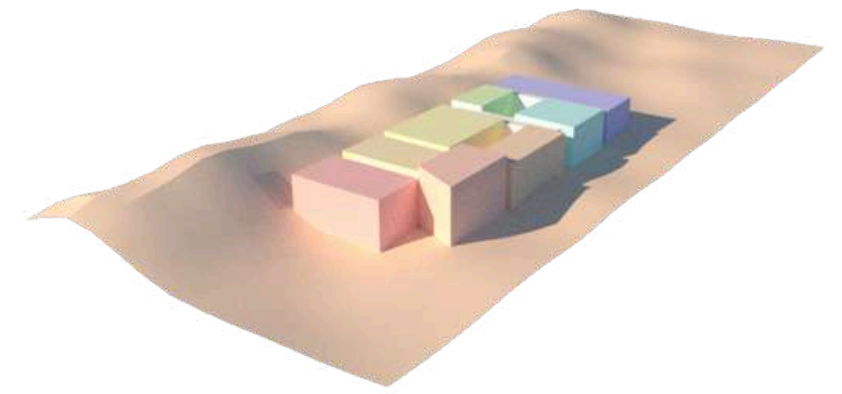
VOLUMETRY



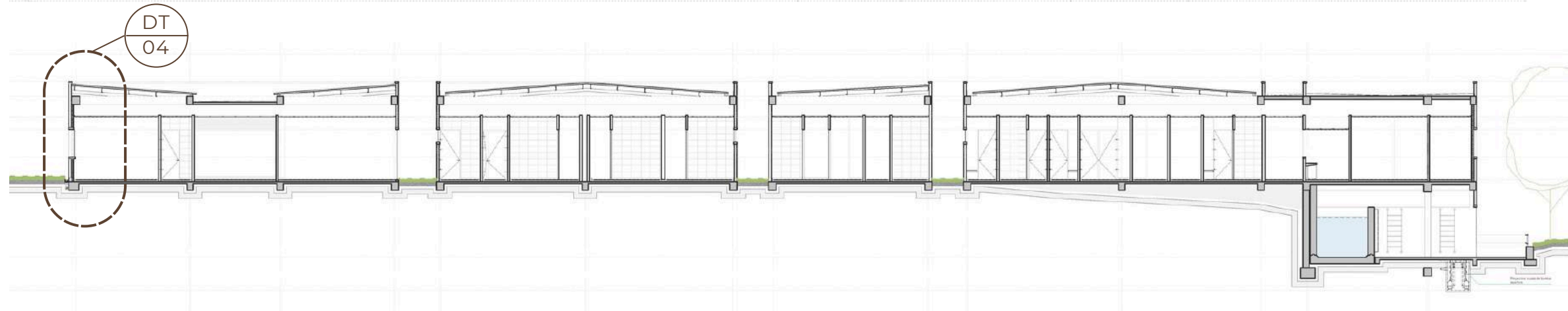
VOIDS



MIXED BOXES

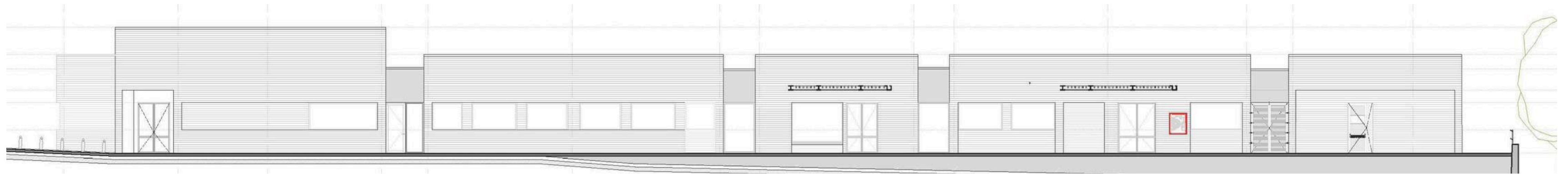
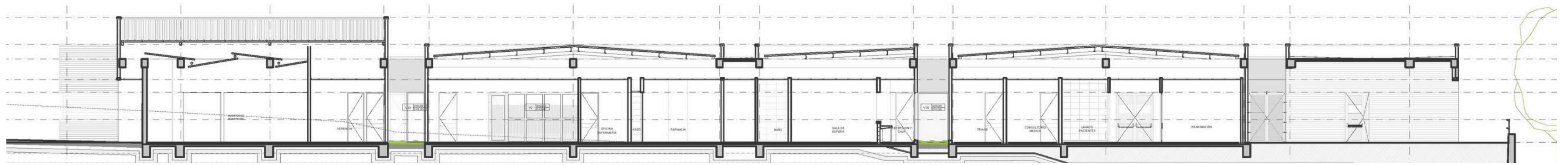


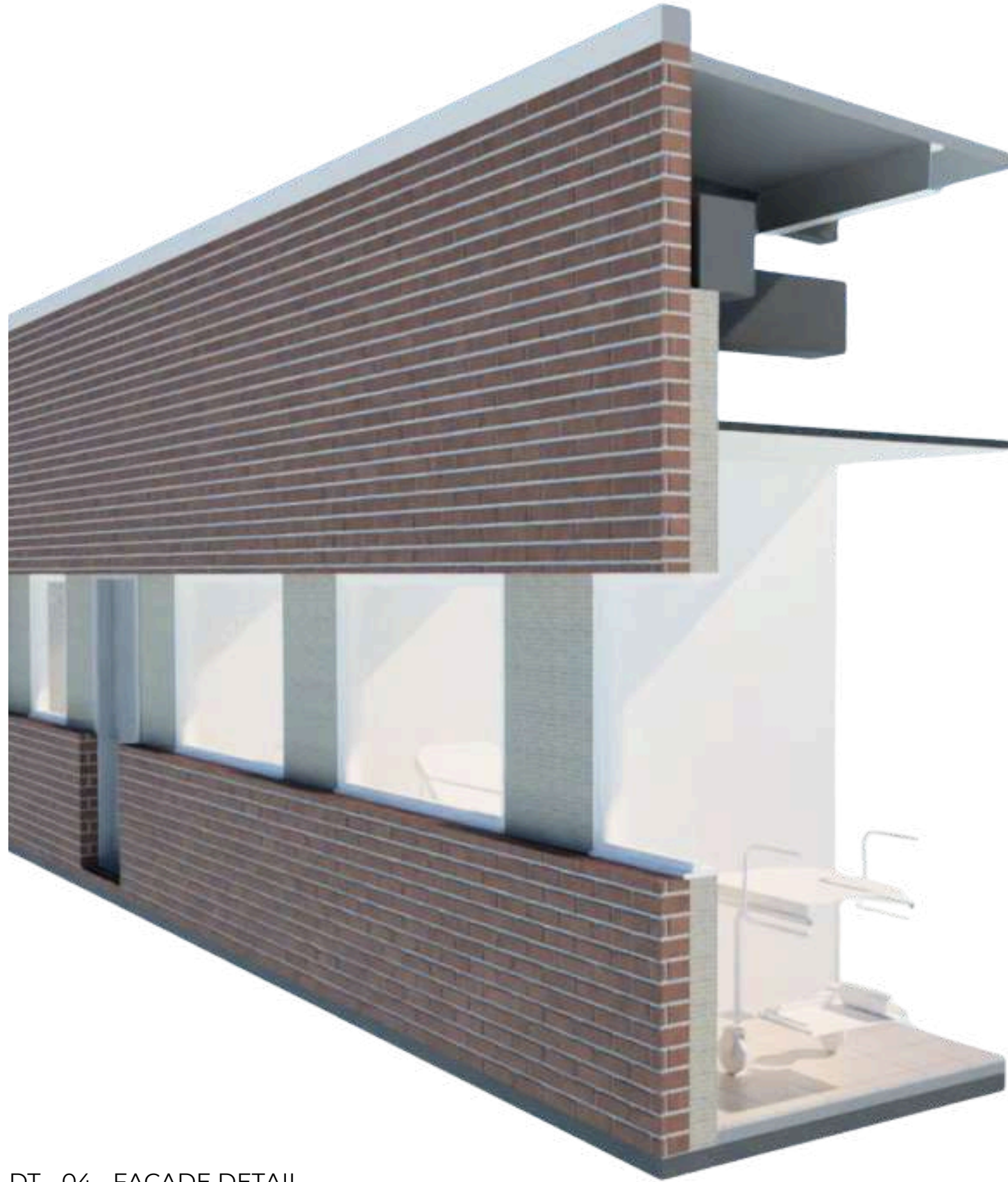
Simplicity, tranquility, and efficiency:
three words to describe this project.



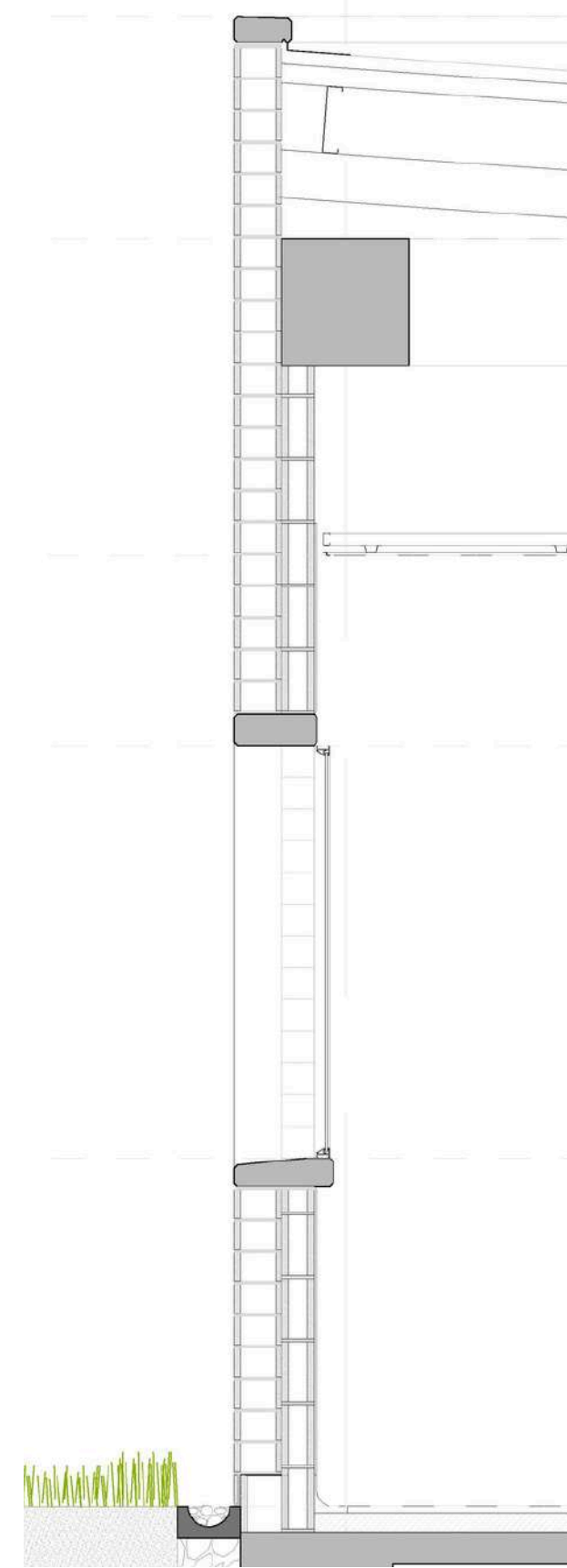
LEVEL 1

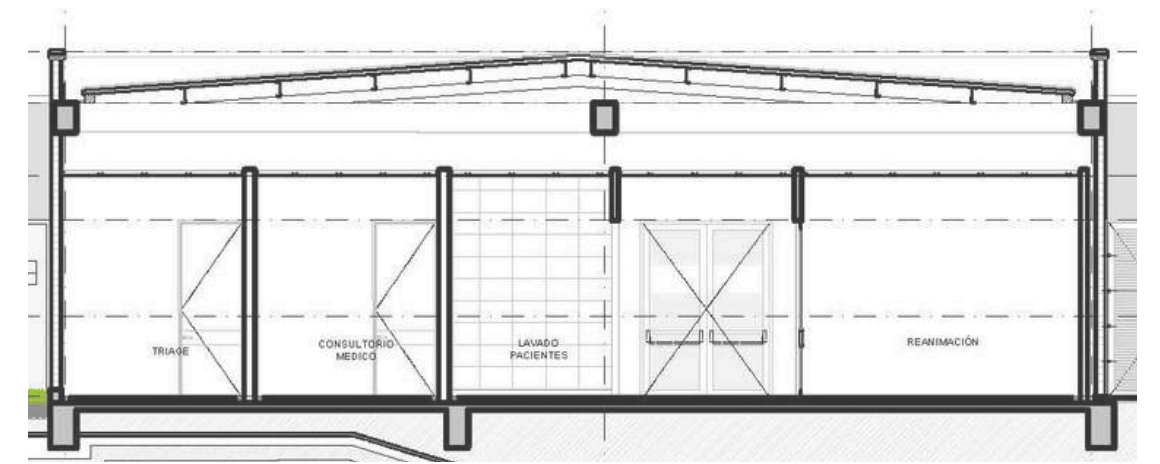
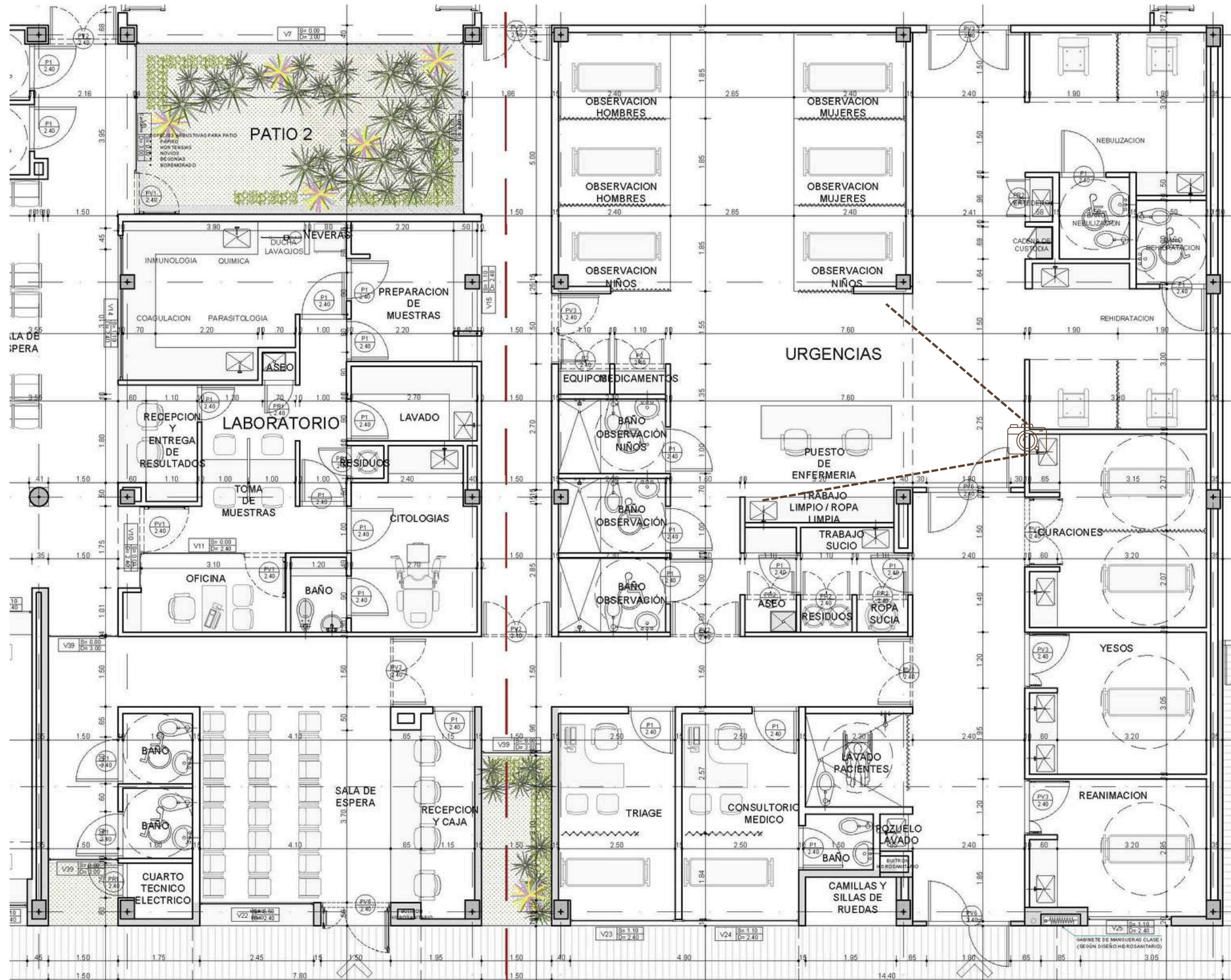
- 1. Outpatient consultation
- 2. Dentistry
- 3. Administration
- 4. Pharmacy
- 5. Laboratory
- 6. Emergency room
- 7. Obstetrics
- 8. Hospitalization
- 9. Technicians





DT - 04 - FACADE DETAIL





CONSTRUCTION DETAIL OF THE EMERGENCY CARE UNIT, FOLLOWING THE HEALTHCARE CODE.

ARCHITECTURE PORTFOLIO

CAMILA CHAVERRA

ARCHITECTURAL DRAFTER

(+57)3137067881

arq.mcchp@gmail.com

www.linkedin.com/in/arqcamilachaverra